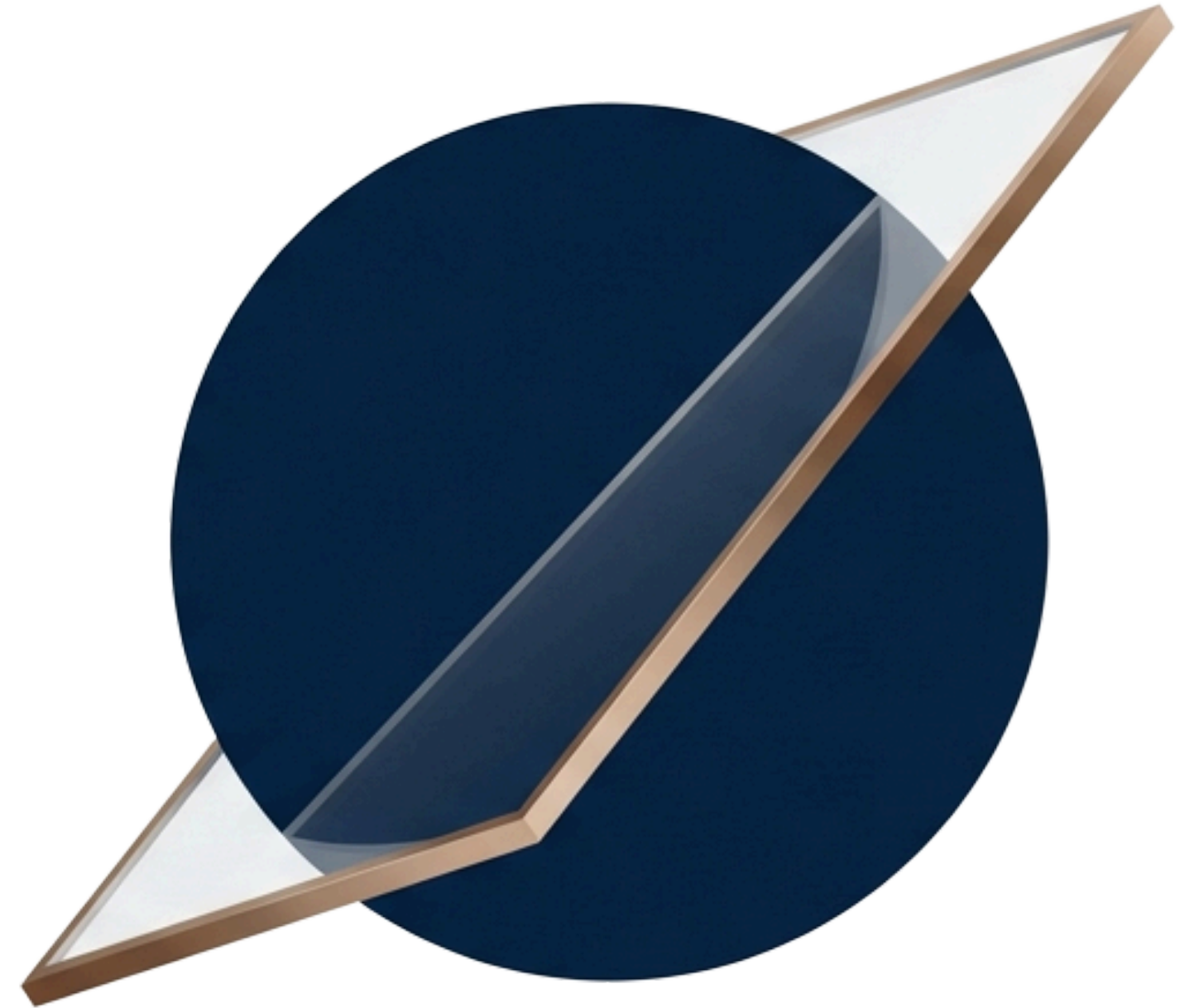


AI for Executives: From Tool to Human First Thinking Companion

Shifting from boosting efficiency to gaining cognitive and strategic advantages.



Jennifer Surujpaul
IT Solutionist
March 2026



Strategic context requires experienced navigation.

Jennifer Surujpaul
Founder, IT Solutionist

- Digital Transformation Consultant
- AI & Governance Advisor
- Board-Level Technology Strategy
- Former Senior Leader in Education & IT

The Myth

AI is primarily an efficiency tool designed to speed up tasks.

MYTH

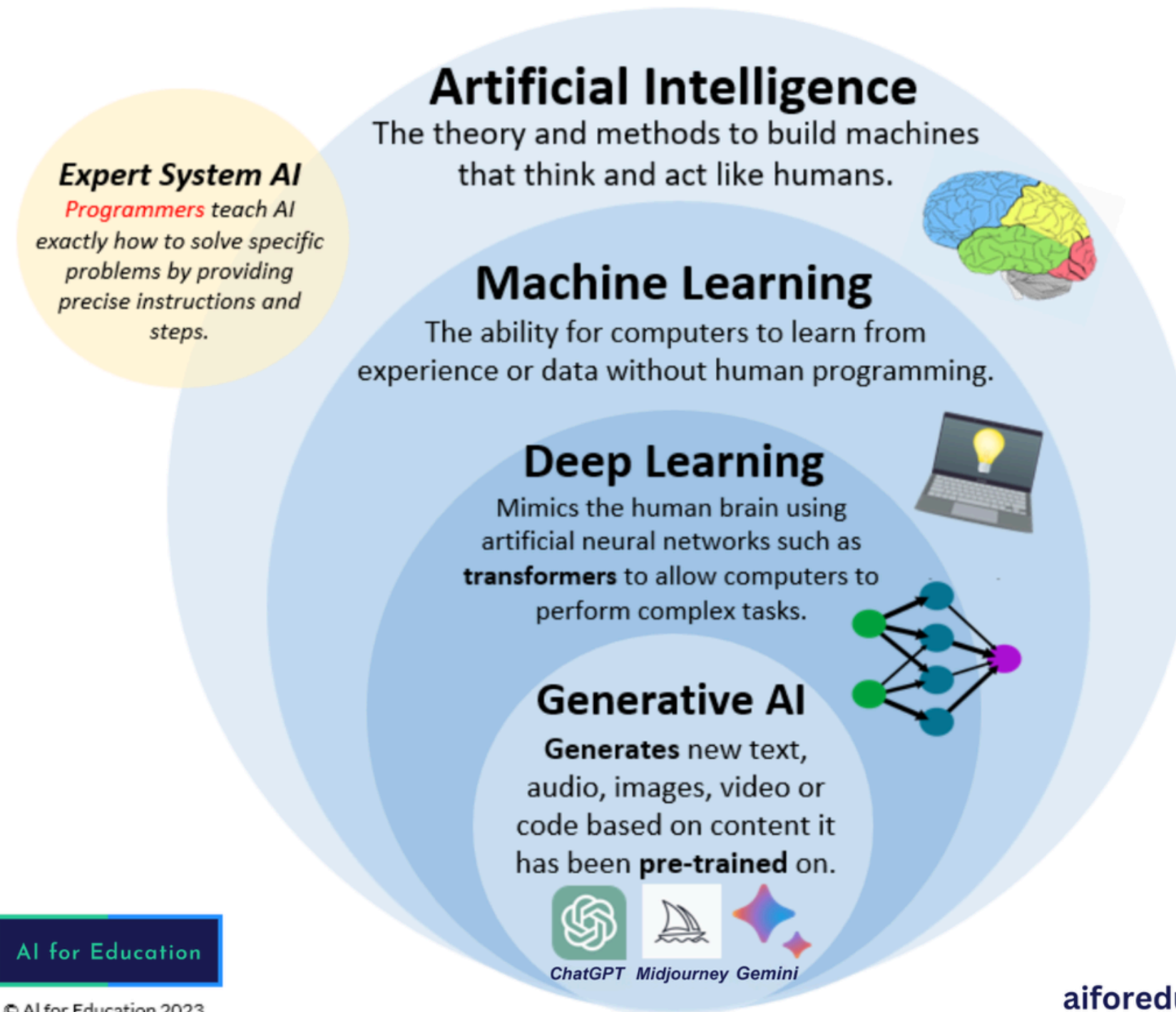
The Reality

While AI can draft emails, viewing it solely as an accelerator of administrative tasks leaves its immense strategic value on the table.

FACT

Defining Generative AI

To understand generative artificial intelligence (GenAI), we first need to understand how the technology builds from each of the AI subcategories listed below.



The New Executive Suite



Access assumed: Large Language Models (LLMs).

This is not a guide on how to use software.
It is a guide on a new mode of leadership.

The focus is on thinking with AI, not just using AI.

Case Study

From Overwhelmed to Strategic Clarity

Yiota is an Acupuncturist and Chinese herbalist. A small business owner, not a technologist.

NO.1

She didn't use AI to automate tasks.
She used it as a thinking partner.

NO.2

Before AI:

She held ideas in her head.
Decision-making felt heavy.
Business planning felt overwhelming.



NO.3

AI didn't give her intelligence.
It created thinking space.
It slowed her down strategically while accelerating clarity.
She described it as:
'I no longer think alone.'
For executives, that is powerful."

Executives don't need faster emails. They need sharper thinking.

Cognitive Leverage

Extending mental capacity and processing power.

Strategic Acceleration

Moving from idea to execution plan faster.

Decision Velocity

Reducing the latency in complex choices.

Assumption Testing

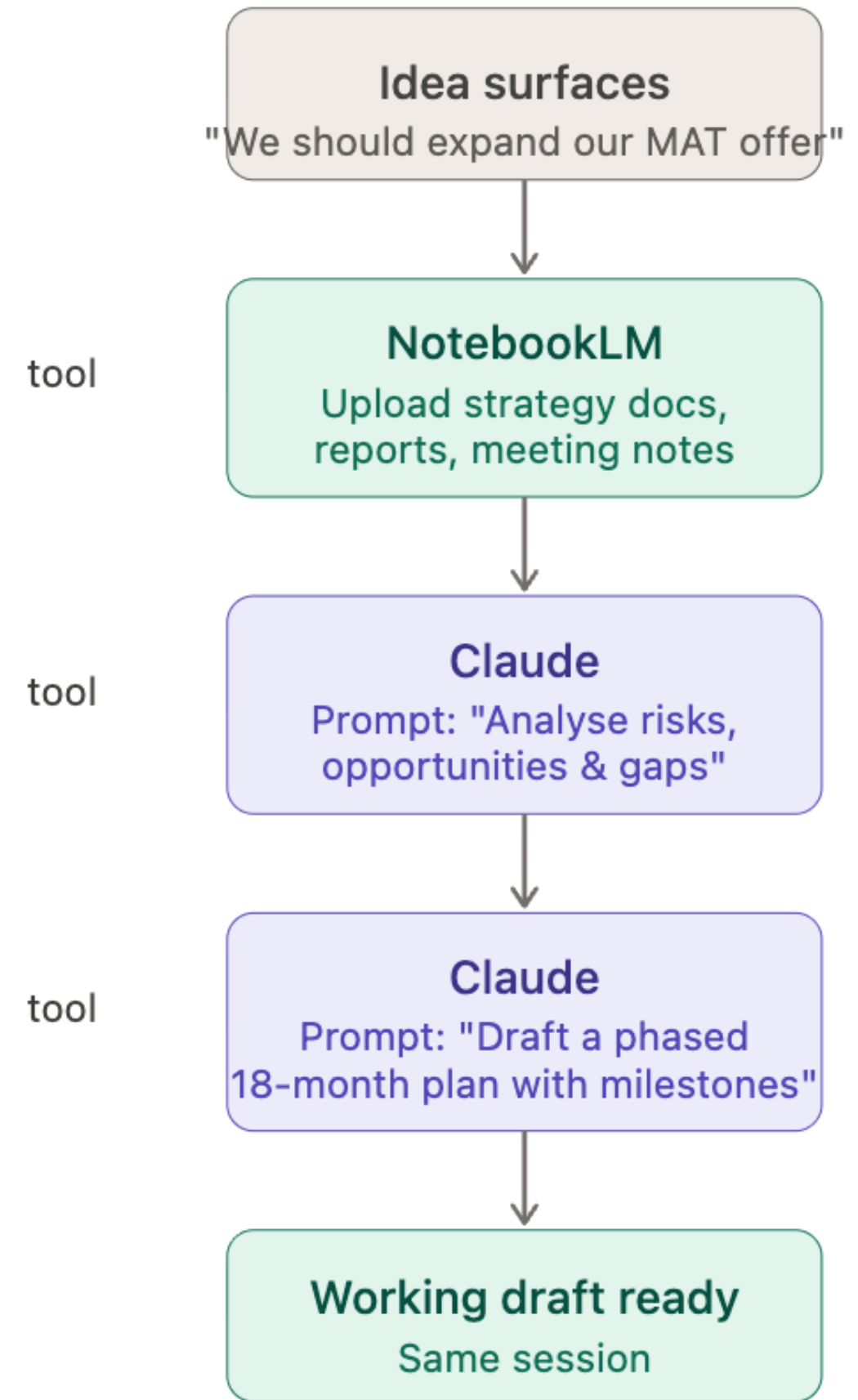
Rigorous, bias-free critique.

Without AI



Weeks to a working first draft

With Claude



Hours to a working first draft

Most organisations float on the surface. Leaders dive deep.

The Tool Mindset

- Admin Support
- Summaries
- Emails

The Companion Mindset

- Strategic Modelling
- Risk Exposure Mapping
- Cultural Transformation
- Cognitive Offload

Note: The vast majority of AI's value lies below the waterline of daily tasks.

What is “What is AI – Really?”

It is not just a search engine. It is a **Thinking Companion**.

> Act as a strategic advisor. Challenge my assumptions about this board-level decision.



Insight: When you treat the AI as a challenger rather than a subordinate, you unlock its ability to stress-test your strategy.

AI reflects the quality of your thinking.

Transactional Prompt



Summarise this report.

Low Value.

Strategic Prompt



Analyse this strategy paper. Identify **blind spots, risk exposure, conflicting assumptions** and alternative approaches.

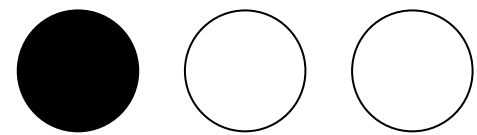
High Value.

Better questions = Better outputs.

Prompt 1:
What are you, ChatGPT

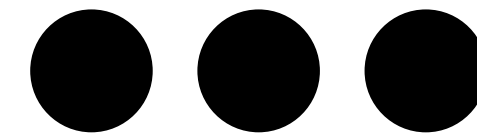
Prompt 2:

(choose one)



Novice Prompt:

Generate a list of evidence-based strategies to address the problem of **[describe problem]**.



More Advanced Prompt:

Ask me questions one at a time to help me think through the **[situation/policy/issue]** in the attached document. Your task is to help me identify potential impacts on my organisation and implementation strategies.

Effective Prompts

Simplest
prompt

More detailed
prompt

5S framework
prompt



Less Effective

More Effective

From Command to Partnership

Command Mode

- One-sentence commands
- Transactional requests



Partnership Mode

- Role assignment ('Act as...')
- Clear context & Strategic framing
- Iterative refinement

“AI rewards executive clarity. Context drives intelligence.”

The Executive AI Shift

Old Logic



- Thinking alone.
- Linear strategy development.
- Reviewing static reports.

AI Companion Logic



- Stress-testing decisions.
- Instant scenario comparison.
- Accelerated insight.

This is not a software upgrade; it is a mindset shift.

Executive Reflection

Where are we currently using AI?

Is it just for efficiency?

Where are we avoiding it? Are we afraid of the strategic layer?

What leadership behaviour must change to enable this shift?

Implementation Plan: The Next 30 Days



Key Takeaways



Strategy

AI is not the strategy; it is a thinking companion.



Mindset

Move from 'Tool' to 'Partner'.



Behaviour

Behaviour change must precede technical transformation.



Culture

Leadership modelling determines the organisational culture.

"AI will not replace leaders.
But leaders who think with AI
will shape the future differently."

Jennifer Surujpaul
IT Solutionist
Contact for Strategic Audit

References

1. AI for Education: <https://www.aiforeducation.io/>
2. NotebookLM by Google: <https://notebooklm.google.com/>
3. ChatGPT: <https://chatgpt.com/>
4. Claude AI: <https://claude.ai/new>